



Pony Testing International Group

报告编号(Report ID): H05063023021D~1

锂电池UN38.3测试报告

Lithium Battery UN38.3 Test Report

样品名称 (Sample Description)	Manganese Dioxide Lithium Battery CR1620
委托单位 (Applicant)	CHUNG PAK BATTERY WORKS LTD
生产单位 (Manufacturer)	CHUNG PAK (GUANG DONG) BATTERY INDUSTRIAL CO., LTD


Pony Testing International Group
www.ponytest.com

No.: H05063023021D

Code: p7j3ia



Pony Testing International Group
I、SAMPLE DESCRIPTION

Sample Name	Manganese Dioxide Lithium Battery		Battery Type	CR1620	
Client	CHUNG PAK BATTERY WORKS LTD				
Manufacturer	CHUNG PAK (GUANG DONG) BATTERY INDUSTRIAL CO., LTD				
Nominal Voltage	3.0V	Rated Capacity	70mAh	Limited Charge Voltage	---
Charge Current	---	Maximum Continuous Charge Current	---	End Charge Current	---
Cut-off Voltage	2.0V	Maximum Discharge Current	0.06mA	Use	---
Cells Number	1PCS	Cell Model	CR1620	Rated Capacity	70mAh
Manufacturer of cell	CHUNG PAK (GUANG DONG) BATTERY INDUSTRIAL CO., LTD				
Chemical component	Lithium 1.9%, Manganese Dioxide 24.2% etc.				
Client date	2013-04-30		Finished date	2013-05-20	

II、REFERENCE METHOD

《United Nations Recommendations On The Transport Of Dangerous Goods, Manual Of Tests And Criteria》
(ST/SG/AC.10/11/Rev.5/Amend.1).

III、TEST ITEM

- | | |
|------------------------|---------------------------|
| 1. Altitude simulation | 5. External short circuit |
| 2. Thermal test | 6. Crush |
| 3. Vibration | 7. Overcharge |
| 4. Shock | 8. Forced discharge |

IV、CONCLUSION

ITEM	SAMPLE NUMBER	STANDARD	CONCLUSION
Altitude simulation	N1~N10 N11~N20	UN38.3	PASS
Thermal test			PASS
Vibration			PASS
Shock			PASS
External short circuit			PASS
Crush	N21~N30		PASS
Overcharge	---		N/A (Not applicable)
Forced discharge	N31~N40		PASS

The submitted battery and component cell were complied with the UN Manual of Tests and Criteria, Part III, sub-section 38.3.

Prepared by: *XiaZhaoshong*

Checked by: *chengpeng* Approved by:

Approval Date: May 20, 2013

Pigou



Pony Testing International Group

Notes:

N1~N10, N21~N25: Cells in undischarged states;

N11~N20, N26~N40: Cells in fully discharged states.

V、 PHOTO OF THE SAMPLE



Authenticate the photo on original report only



Pony Testing International Group

VI. TEST METHOD

Tests T.1 to T.5 shall be conducted in sequence on the same cell or battery. Tests T.6 and T.8 shall be conducted using not otherwise tested cells or batteries. Test T.7 may be conducted using undamaged batteries previously used in tests T.1 to T.5 for purposes of testing on cycled batteries.

In order to quantify the mass loss, the following procedure is provided:

$$\text{Mass loss(\%)} = (M_1 - M_2) / M_1 \times 100$$

Where M_1 is the mass before the test and M_2 is the mass after the test. When mass loss does not exceed the values in Table blow, it shall be considered as "no mass loss".

Mass M of cell or battery	Mass loss limit
$M < 1\text{g}$	0.5%
$1\text{g} \leq M \leq 75\text{g}$	0.2%
$M > 75\text{g}$	0.1%

T.1 Altitude simulation

Test cells and batteries shall be stored at a pressure of 11.6 kPa or less for at least six hours at ambient temperature ($20 \pm 5 \text{ }^\circ\text{C}$).

Cells and batteries meet this requirement if there is no leakage, no venting, no disassembly, no rupture and no fire and if the open circuit voltage of each test cell or battery after testing is not less than 90% of its voltage immediately prior to this procedure. The requirement relating to voltage is not applicable to test cells and batteries at fully discharged states.

T.2 Thermal test

Test cells and batteries are to be stored for at least six hours at a test temperature equal to $72 \pm 2 \text{ }^\circ\text{C}$, followed by storage for at least six hours at a test temperature equal to $-40 \pm 2 \text{ }^\circ\text{C}$. The maximum time interval between test temperature extremes is 30 minutes. This procedure is to be repeated until 10 total cycles are complete, after which all test cells and batteries are to be stored for 24 hours at ambient temperature ($20 \pm 5 \text{ }^\circ\text{C}$). For large cells and batteries the duration of exposure to the test temperature extremes should be at least 12 hours.

Cells and batteries meet this requirement if there is no leakage, no venting, no disassembly, no rupture and no fire and if the open circuit voltage of each test cell or battery after testing is not less than 90% of its voltage immediately prior to this procedure. The requirement relating to voltage is not applicable to test cells and batteries at fully discharged states.



Pony Testing International Group

T.3 Vibration

Cells and batteries are firmly secured to the platform of the vibration machine without distorting the cells in such a manner as to faithfully transmit the vibration. The vibration shall be a sinusoidal waveform with a logarithmic sweep between 7 Hz and 200 Hz and back to 7 Hz traversed in 15 minutes. This cycle shall be repeated 12 times for a total of 3 hours for each of three mutually perpendicular mounting positions of the cell. One of the directions of vibration must be perpendicular to the terminal face.

The logarithmic frequency sweep shall differ for cells and batteries with a gross mass of not more than 12 kg (cells and small batteries), and for batteries with a gross mass of more than 12 kg (large batteries).

For cells and small batteries: from 7 Hz a peak acceleration of 1 g_n is maintained until 18 Hz is reached. The amplitude is then maintained at 0.8 mm (1.6 mm total excursion) and the frequency increased until a peak acceleration of 8 g_n occurs (approximately 50 Hz).

A peak acceleration of 8 g_n is then maintained until the frequency is increased to 200 Hz.

For large batteries: from 7 Hz to a peak acceleration of 1 g_n is maintained until 18 Hz is reached. The amplitude is then maintained at 0.8 mm (1.6 mm total excursion) and the frequency increased until a peak acceleration of 2 g_n occurs (approximately 25 Hz). A peak acceleration of 2 g_n is then maintained until the frequency is increased to 200 Hz.

Cells and batteries meet this requirement if there is no leakage, no venting, no disassembly, no rupture and no fire during the test and after the test and if the open circuit voltage of each test cell or battery directly after testing in its third perpendicular mounting position is not less than 90% of its voltage immediately prior to this procedure. The requirement relating to voltage is not applicable to test cells and batteries at fully discharged states.

T.4 Shock

Test cells and batteries shall be secured to the testing machine by means of a rigid mount which will support all mounting surfaces of each test battery. Each cell or battery shall be subjected to a half-sine shock of peak acceleration of 150 g_n and pulse duration of 6 milliseconds. Each cell or battery shall be subjected to three shocks in the positive direction followed by three shocks in the negative direction of three mutually perpendicular mounting positions of the cell or battery for a total of 18 shocks.

However, large cells and large batteries shall be subjected to a half-sine shock of peak acceleration of 50 g_n and pulse duration of 11 milliseconds. Each cell or battery is subjected to three shocks in the positive direction followed by three shocks in the negative direction of each of three mutually perpendicular mounting positions of the cell for a total of 18 shocks.



Pony Testing International Group

Cells and batteries meet this requirement if there is no leakage, no venting, no disassembly, no rupture and no fire and if the open circuit voltage of each test cell or battery after testing is not less than 90% of its voltage immediately prior to this procedure. The requirement relating to voltage is not applicable to test cells and batteries at fully discharged states.

T.5 External short circuit

The cell or battery to be tested shall be temperature stabilized so that its external case temperature reaches 55 ± 2 °C and then the cell or battery shall be subjected to a short circuit condition with a total external resistance of less than 0.1 ohm at 55 ± 2 °C. This short circuit condition is continued for at least one hour after the cell or battery external case temperature has returned to 55 ± 2 °C.

Cells and batteries meet this requirement if their external temperature does not exceed 170 °C and there is no disassembly, no rupture and no fire during the test and within six hours after the test.

T.6 Impact / Crush

Impact (applicable to cylindrical cells greater than 20 mm in diameter)

The sample cell or component cell is to be placed on a flat smooth surface. A $15.8 \text{ mm} \pm 0.1 \text{ mm}$ diameter, at least 6 cm long, or the longest dimension of the cell, whichever is greater, Type 316 stainless steel bar is to be placed across the centre of the sample. A $9.1 \text{ kg} \pm 0.1 \text{ kg}$ mass is to be dropped from a height of 61 ± 2.5 cm at the intersection of the bar and sample in a controlled manner using a near frictionless, vertical sliding track or channel with minimal drag on the falling mass. The vertical track or channel used to guide the falling mass shall be oriented 90 degrees from the horizontal supporting surface.

The test sample is to be impacted with its longitudinal axis parallel to the flat surface and perpendicular to the longitudinal axis of the $15.8 \text{ mm} \pm 0.1 \text{ mm}$ diameter curved surface lying across the centre of the test sample. Each sample is to be subjected to only a single impact.

Crush (applicable to prismatic, pouch, coin/button cells and cylindrical cells not more than 20 mm in diameter)

A cell or component cell is to be crushed between two flat surfaces. The crushing is to be gradual with a speed of approximately 1.5 cm/s at the first point of contact. The crushing is to be continued until the first of the three options below is reached.

- The applied force reaches $13 \text{ kN} \pm 0.78 \text{ kN}$;
- The voltage of the cell drops by at least 100 mV; or
- The cell is deformed by 50% or more of its original thickness.

Once the maximum pressure has been obtained, the voltage drops by 100 mV or more, or the cell is deformed by at least 50% of its original thickness, the pressure shall be released.



Pony Testing International Group

A prismatic or pouch cell shall be crushed by applying the force to the widest side. A button/coin cell shall be crushed by applying the force on its flat surfaces. For cylindrical cells, the crush force shall be applied perpendicular to the longitudinal axis.

Each test cell or component cell is to be subjected to one crush only. The test sample shall be observed for a further 6 h. The test shall be conducted using test cells or component cells that have not previously been subjected to other tests.

Cells and component cells meet this requirement if their external temperature does not exceed 170 °C and there is no disassembly and no fire during the test and within six hours after this test.

T.7 Overcharge

The charge current shall be twice the manufacturer's recommended maximum continuous charge current. The minimum voltage of the test shall be as follows:

- (a) When the manufacturer's recommended charge voltage is not more than 18V, the minimum voltage of the test shall be the lesser of two times the maximum charge voltage of the battery or 22V.
- (b) When the manufacturer's recommended charge voltage is more than 18V, the minimum voltage of the test shall be 1.2 times the maximum charge voltage.

Tests are to be conducted at ambient temperature; the duration of the test shall be 24 hours.

Rechargeable batteries meet this requirement if there is no disassembly and no fire during the test and within seven days after the test.

T.8 Forced discharge

Each cell shall be forced discharged at ambient temperature by connecting it in series with a 12V D.C. power supply at an initial current equal to the maximum discharge current specified by the manufacturer.

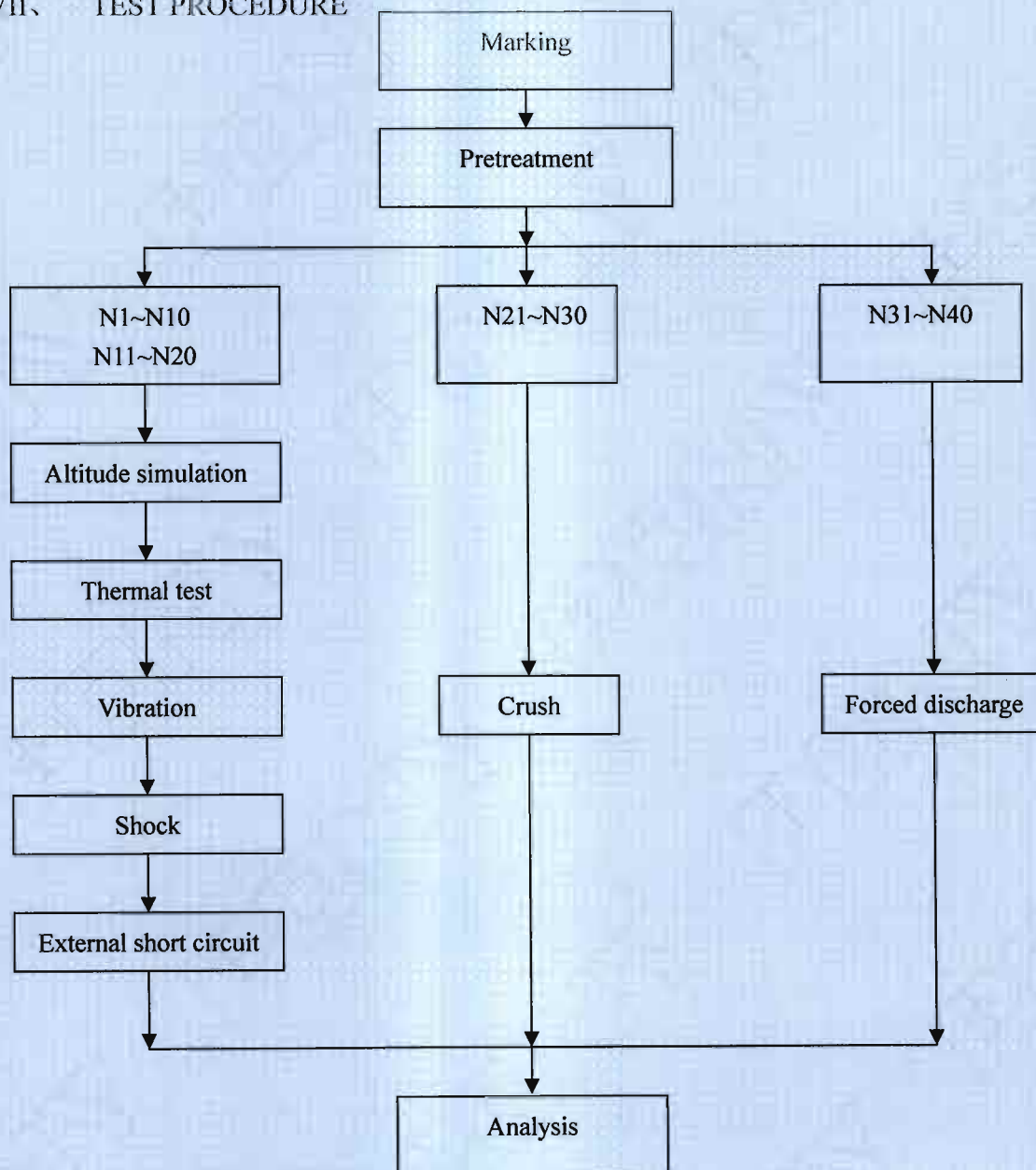
The specified discharge current is to be obtained by connecting a resistive load of the appropriate size and rating in series with the test cell. Each cell shall be forced discharged for a time interval (in hours) equal to its rated capacity divided by the initial test current (in ampere).

Primary or rechargeable cells meet this requirement if there is no disassembly and no fire during the test and within seven days after the test.



Pony Testing International Group

VII、 TEST PROCEDURE



VIII、 TEST APPARATUS

IE-0121 Rechargeable battery test system

IE-0294 DC regulated power supply

IE-0434 Vacuum chamber

IE-0198 Battery extrusion needling machine

IE-0219 Temperature circulation chamber

IE-0125 Electronic balance

IE-0128 Vibration test instrument

IE-0090 Digital multimeter

IE-0287 Shock test instrument

IE-0185 Thermoelectric pair

IE-0281 Battery anti-explosion chamber



Pony Testing International Group

IX、 DATA

1. Altitude simulation

No.	Pre-test		After test		Mass loss (%)	Voltage loss (%)	Whether leakage, venting, disassembly, rupture, fire (Y/N)
	Mass (g)	Voltage (V)	Mass (g)	Voltage (V)			
N1	1.199	3.326	1.199	3.326	0.000	0.00	N
N2	1.193	3.330	1.193	3.330	0.000	0.00	N
N3	1.186	3.320	1.186	3.320	0.000	0.00	N
N4	1.192	3.329	1.192	3.329	0.000	0.00	N
N5	1.188	3.327	1.188	3.327	0.000	0.00	N
N6	1.202	3.324	1.202	3.323	0.000	0.03	N
N7	1.191	3.327	1.191	3.327	0.000	0.00	N
N8	1.211	3.333	1.211	3.333	0.000	0.00	N
N9	1.179	3.335	1.179	3.335	0.000	0.00	N
N10	1.193	3.326	1.193	3.326	0.000	0.00	N
N11	1.200	---	1.200	---	0.000	---	N
N12	1.201	---	1.201	---	0.000	---	N
N13	1.223	---	1.223	---	0.000	---	N
N14	1.187	---	1.187	---	0.000	---	N
N15	1.182	---	1.182	---	0.000	---	N
N16	1.202	---	1.202	---	0.000	---	N
N17	1.207	---	1.207	---	0.000	---	N
N18	1.210	---	1.210	---	0.000	---	N
N19	1.226	---	1.226	---	0.000	---	N
N20	1.210	---	1.210	---	0.000	---	N



Pony Testing International Group

2. Thermal test

No.	Pre-test		After test		Mass loss (%)	Voltage loss (%)	Whether leakage, venting, disassembly, rupture, fire (Y/N)
	Mass (g)	Voltage (V)	Mass (g)	Voltage (V)			
N1	1.199	3.326	1.198	3.318	0.083	0.24	N
N2	1.193	3.330	1.192	3.322	0.084	0.24	N
N3	1.186	3.320	1.185	3.316	0.084	0.12	N
N4	1.192	3.329	1.190	3.316	0.168	0.39	N
N5	1.188	3.327	1.186	3.318	0.168	0.27	N
N6	1.202	3.323	1.201	3.318	0.083	0.15	N
N7	1.191	3.327	1.190	3.318	0.084	0.27	N
N8	1.211	3.333	1.210	3.319	0.083	0.42	N
N9	1.179	3.335	1.178	3.323	0.085	0.36	N
N10	1.193	3.326	1.192	3.317	0.084	0.27	N
N11	1.200	---	1.199	---	0.083	---	N
N12	1.201	---	1.200	---	0.083	---	N
N13	1.223	---	1.222	---	0.082	---	N
N14	1.187	---	1.186	---	0.084	---	N
N15	1.182	---	1.180	---	0.169	---	N
N16	1.202	---	1.201	---	0.083	---	N
N17	1.207	---	1.205	---	0.166	---	N
N18	1.210	---	1.209	---	0.083	---	N
N19	1.226	---	1.225	---	0.082	---	N
N20	1.210	---	1.209	---	0.083	---	N



Pony Testing International Group

3. Vibration

No.	Pre-test		After test		Mass loss (%)	Voltage loss (%)	Whether leakage, venting, disassembly, rupture, fire (Y/N)
	Mass (g)	Voltage (V)	Mass (g)	Voltage (V)			
N1	1.198	3.318	1.198	3.318	0.000	0.00	N
N2	1.192	3.322	1.192	3.321	0.000	0.03	N
N3	1.185	3.316	1.185	3.316	0.000	0.00	N
N4	1.190	3.316	1.190	3.316	0.000	0.00	N
N5	1.186	3.318	1.185	3.317	0.084	0.03	N
N6	1.201	3.318	1.201	3.318	0.000	0.00	N
N7	1.190	3.318	1.190	3.318	0.000	0.00	N
N8	1.210	3.319	1.210	3.318	0.000	0.03	N
N9	1.178	3.323	1.178	3.323	0.000	0.00	N
N10	1.192	3.317	1.192	3.317	0.000	0.00	N
N11	1.199	---	1.198	---	0.083	---	N
N12	1.200	---	1.200	---	0.000	---	N
N13	1.222	---	1.222	---	0.000	---	N
N14	1.186	---	1.185	---	0.084	---	N
N15	1.180	---	1.180	---	0.000	---	N
N16	1.201	---	1.201	---	0.000	---	N
N17	1.205	---	1.205	---	0.000	---	N
N18	1.209	---	1.209	---	0.000	---	N
N19	1.225	---	1.225	---	0.000	---	N
N20	1.209	---	1.209	---	0.000	---	N

www.ponytest.com ©Hotline 400-819-5688

Add: 北京市海淀区苏州街49-3号盈智大厦	Add: 上海市徐汇区桂平路680号35号楼4层	Add: 深圳市南山区创业路中兴工业城6栋1层	Add: 青岛市崂山区株洲路190号6层
Tel: (010) 82618116	Tel: (021) 64851999	Tel: (0755) 26050909	Tel: (0532) 88706866
Add: 天津市南开区红旗路赢寰大厦10层	Add: 宁波市高新区新辉路150号二期4号楼4层	Add: 广州市海珠区敦和路189号海珠科技园3号楼7层	
Tel: (022) 27360730	Tel: (0574) 87736499	Tel: (020) 89224310	



Pony Testing International Group

4. Shock

No.	Pre-test		After test		Mass loss (%)	Voltage loss (%)	Whether leakage, venting, disassembly, rupture, fire (Y/N)
	Mass (g)	Voltage (V)	Mass (g)	Voltage (V)			
N1	1.198	3.318	1.198	3.318	0.000	0.00	N
N2	1.192	3.321	1.192	3.321	0.000	0.00	N
N3	1.185	3.316	1.185	3.315	0.000	0.03	N
N4	1.190	3.316	1.190	3.316	0.000	0.00	N
N5	1.185	3.317	1.185	3.317	0.000	0.00	N
N6	1.201	3.318	1.201	3.318	0.000	0.00	N
N7	1.190	3.318	1.190	3.317	0.000	0.03	N
N8	1.210	3.318	1.210	3.318	0.000	0.00	N
N9	1.178	3.323	1.178	3.323	0.000	0.00	N
N10	1.192	3.317	1.192	3.317	0.000	0.00	N
N11	1.198	---	1.198	---	0.000	---	N
N12	1.200	---	1.200	---	0.000	---	N
N13	1.222	---	1.222	---	0.000	---	N
N14	1.185	---	1.184	---	0.084	---	N
N15	1.180	---	1.180	---	0.000	---	N
N16	1.201	---	1.201	---	0.000	---	N
N17	1.205	---	1.205	---	0.000	---	N
N18	1.209	---	1.209	---	0.000	---	N
N19	1.225	---	1.225	---	0.000	---	N
N20	1.209	---	1.209	---	0.000	---	N



Pony Testing International Group

5. External short circuit

No.	Peak temperature (°C)	Whether disassembly, rupture, fire (Y/N)
N1	61	N
N2	59	N
N3	63	N
N4	62	N
N5	61	N
N6	60	N
N7	65	N
N8	61	N
N9	60	N
N10	58	N
N11	55	N
N12	56	N
N13	58	N
N14	55	N
N15	57	N
N16	55	N
N17	56	N
N18	58	N
N19	55	N
N20	56	N



Pony Testing International Group

6. Crush

No.	Peak temperature (°C)	Whether disassembly, rupture, fire (Y/N)
N21	25	N
N22	26	N
N23	26	N
N24	26	N
N25	25	N
N26	26	N
N27	26	N
N28	25	N
N29	25	N
N30	26	N

7. Overcharge

N/A

8. Forced discharge

No.	Whether disassembly, fire (Y/N)
N31	N
N32	N
N33	N
N34	N
N35	N
N36	N
N37	N
N38	N
N39	N
N40	N

*** End of report ***